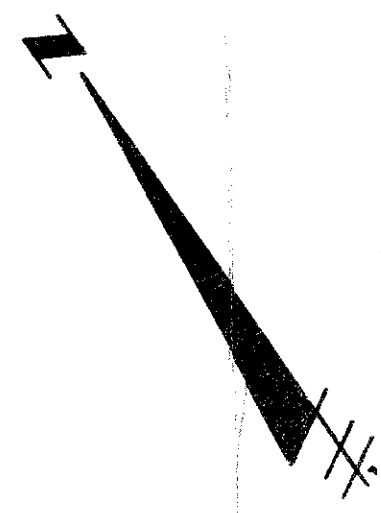


BROOKSIDE - PLAT NO. 2  
OF PALM BEACH POLO AND COUNTRY CLUB

WELLINGTON P.U.D.  
IN PART OF SECTION 14, TOWNSHIP 44 SOUTH, 41 EAST  
PALM BEACH COUNTY, FLORIDA  
IN TWO SHEETS SHEET TWO

GEE & JENSON  
ENGINEERS - ARCHITECTS - PLANNERS, INC.  
WEST PALM BEACH FLORIDA  
MARCH 1985  
SCALE IN FEET SCALE: 1" = 50'

51/96  
STATE OF FLORIDA  
COUNTY OF PALM BEACH  
This plat was filed for  
record at M. this day  
of 1985, and duly  
recorded in Plat Book No.  
on Page  
JOHN B. DUNKLE  
Clerk Circuit Court  
By: D.C.

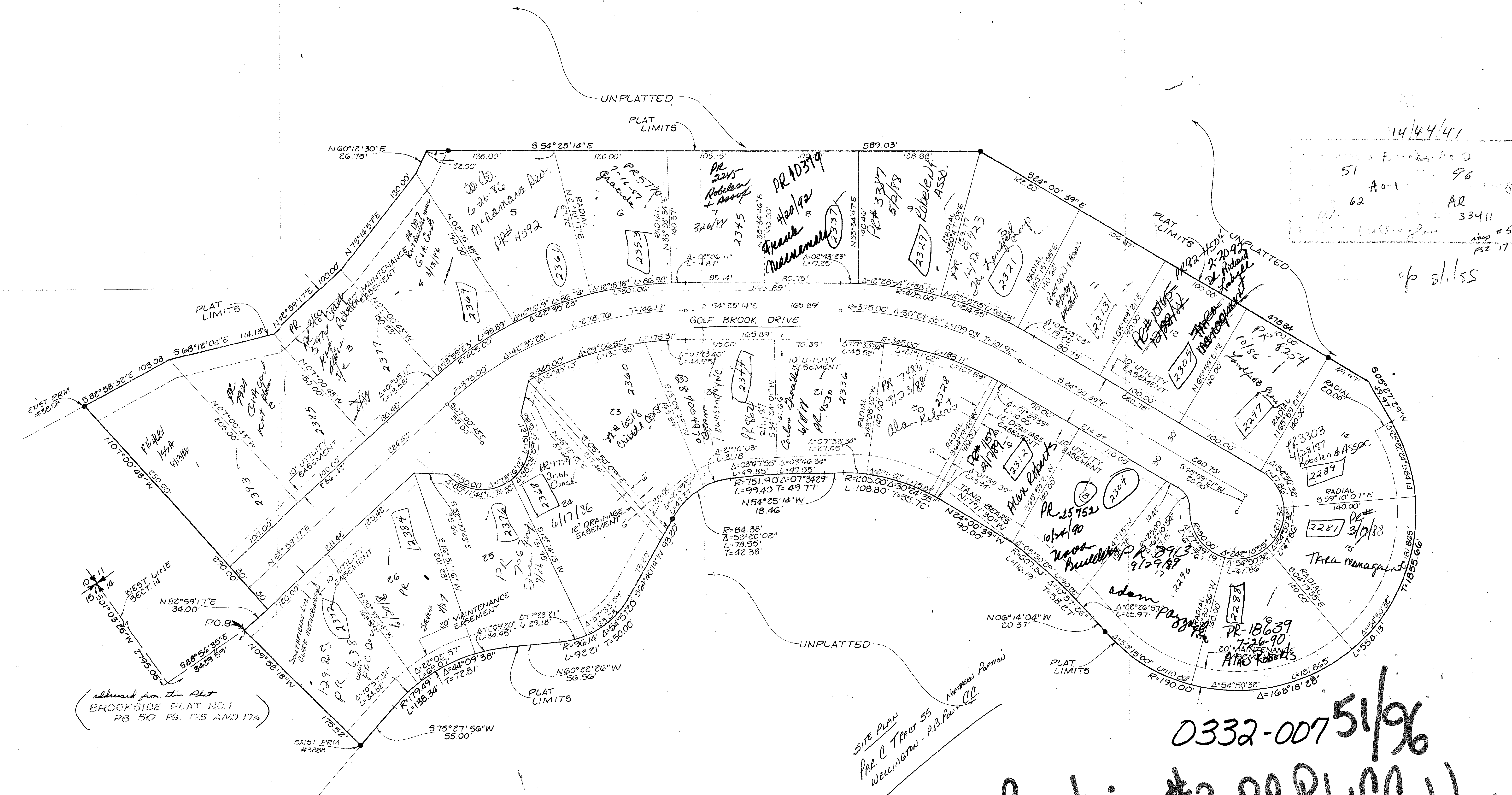


DRAWING NUMBER  
51/96

DRAWING NUMBER

DRAWING NUMBER

DRAWING NUMBER



0332-00751/96  
Brooksidge #2 P.B. Plat # CC. Well